

## Fix Eudora SSL error message

Last Updated Wednesday, 20 July 2016 08:27

---

1. Click **Tools**, then **Options** from the menu bar.

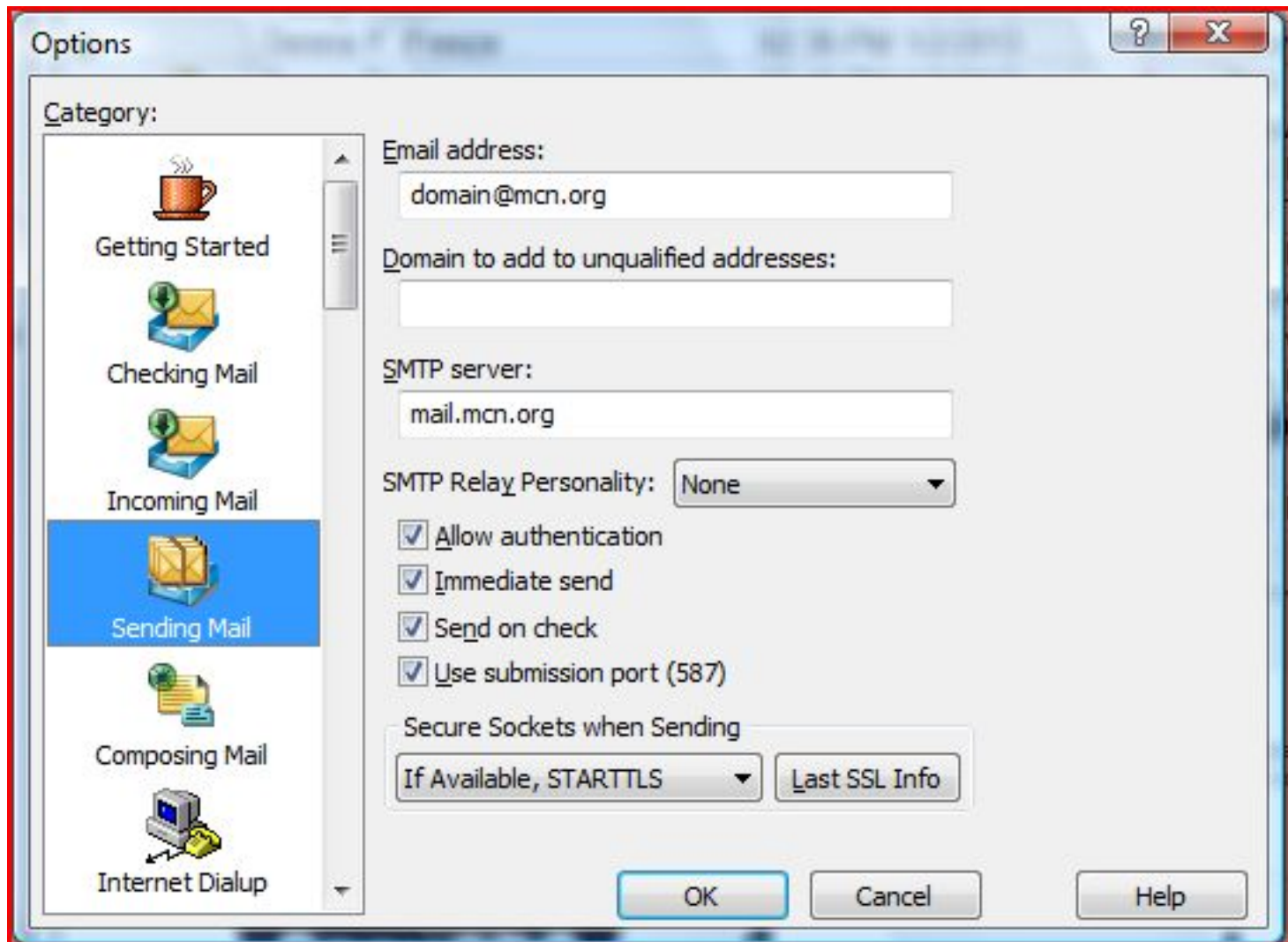


## Fix Eudora SSL error message

Last Updated Wednesday, 20 July 2016 08:27

---

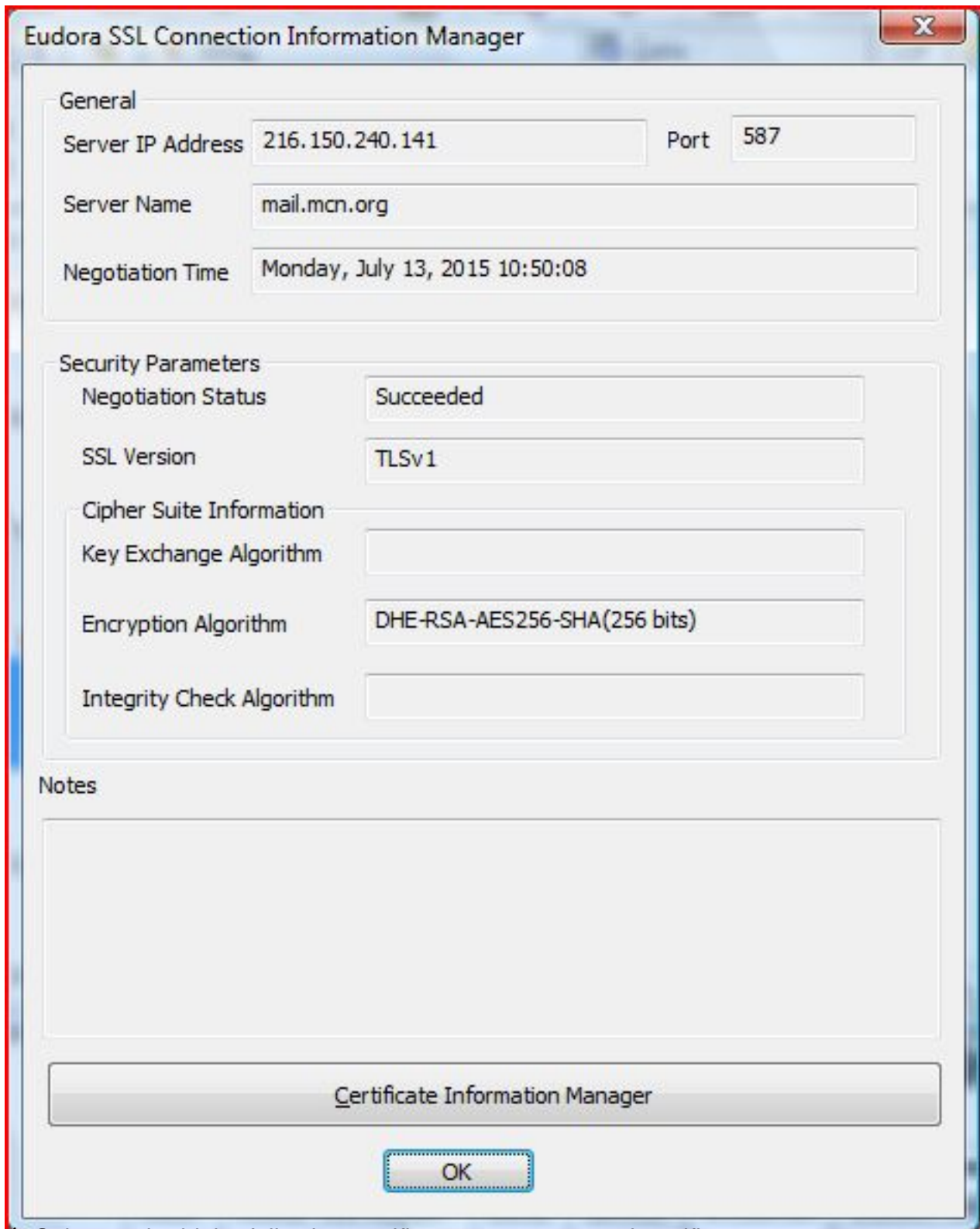
2. Click **Sending Mail** in the category list, then click the **Last SSL Info** button. (You may need to do this for Checking Mail instead)



3. Click **Certificate Information Manager**.

## Fix Eudora SSL error message

Last Updated Wednesday, 20 July 2016 08:27



The screenshot shows the 'Eudora SSL Connection Information Manager' dialog box. It is divided into three main sections: General, Security Parameters, and Notes. The General section contains fields for Server IP Address (216.150.240.141), Port (587), Server Name (mail.mcn.org), and Negotiation Time (Monday, July 13, 2015 10:50:08). The Security Parameters section shows Negotiation Status (Succeeded), SSL Version (TLSv1), Cipher Suite Information (Key Exchange Algorithm, Encryption Algorithm: DHE-RSA-AES256-SHA(256 bits), Integrity Check Algorithm). The Notes section is empty. At the bottom, there is a 'Certificate Information Manager' button and an 'OK' button.

General	
Server IP Address	216.150.240.141
Port	587
Server Name	mail.mcn.org
Negotiation Time	Monday, July 13, 2015 10:50:08

Security Parameters	
Negotiation Status	Succeeded
SSL Version	TLSv1
Cipher Suite Information	
Key Exchange Algorithm	
Encryption Algorithm	DHE-RSA-AES256-SHA(256 bits)
Integrity Check Algorithm	

Notes

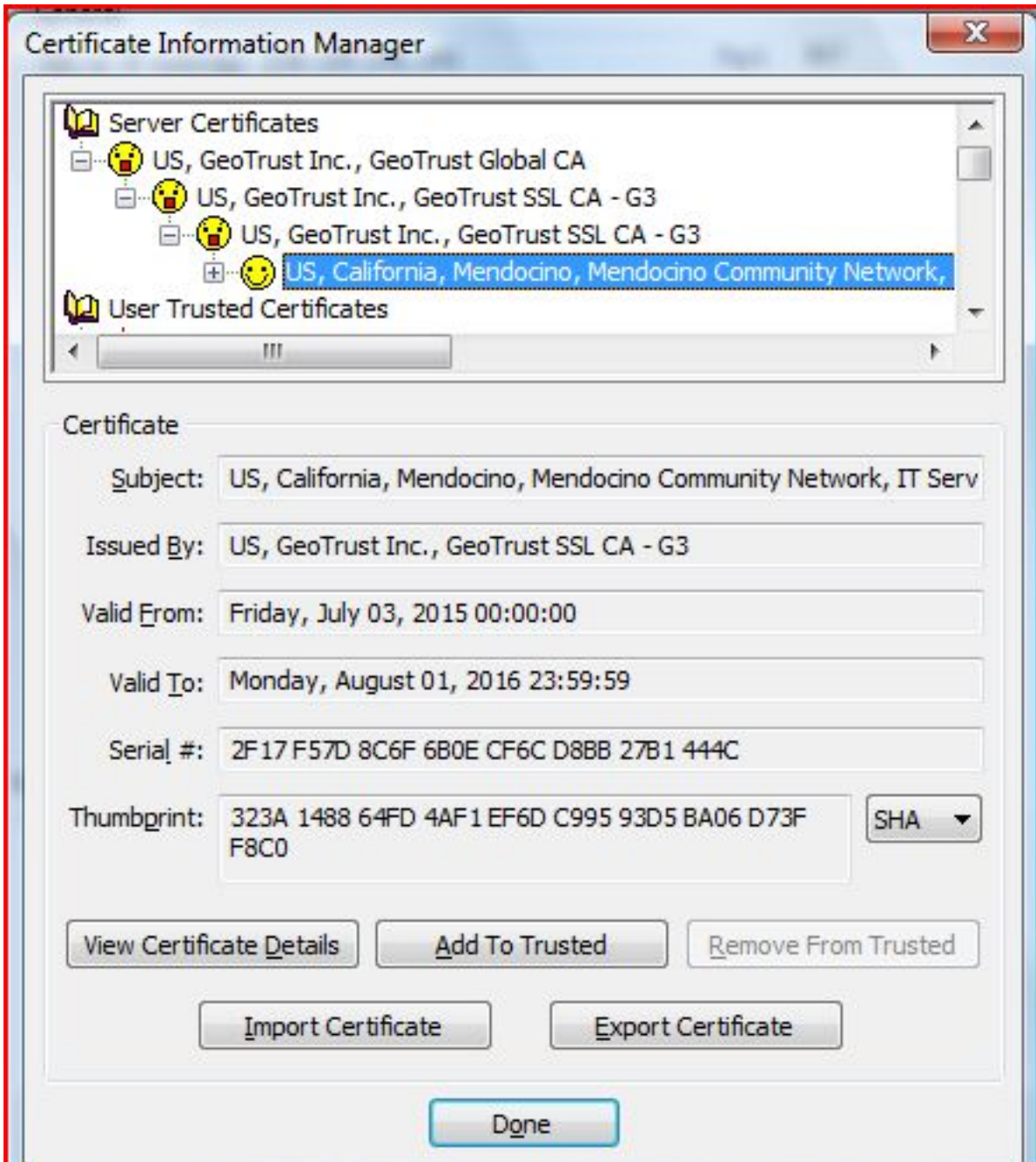
Certificate Information Manager

OK

4. Select and add the following certificates to your trusted certificate services, \*.mcn.org

## Fix Eudora SSL error message

Last Updated Wednesday, 20 July 2016 08:27



For Certificate Client you will highlight the certificate in the list, click on 'Add To Trusted' in the right pane, and click on 'Done' to close the window. You should now be fully configured. Try sending yourself a test message. OK